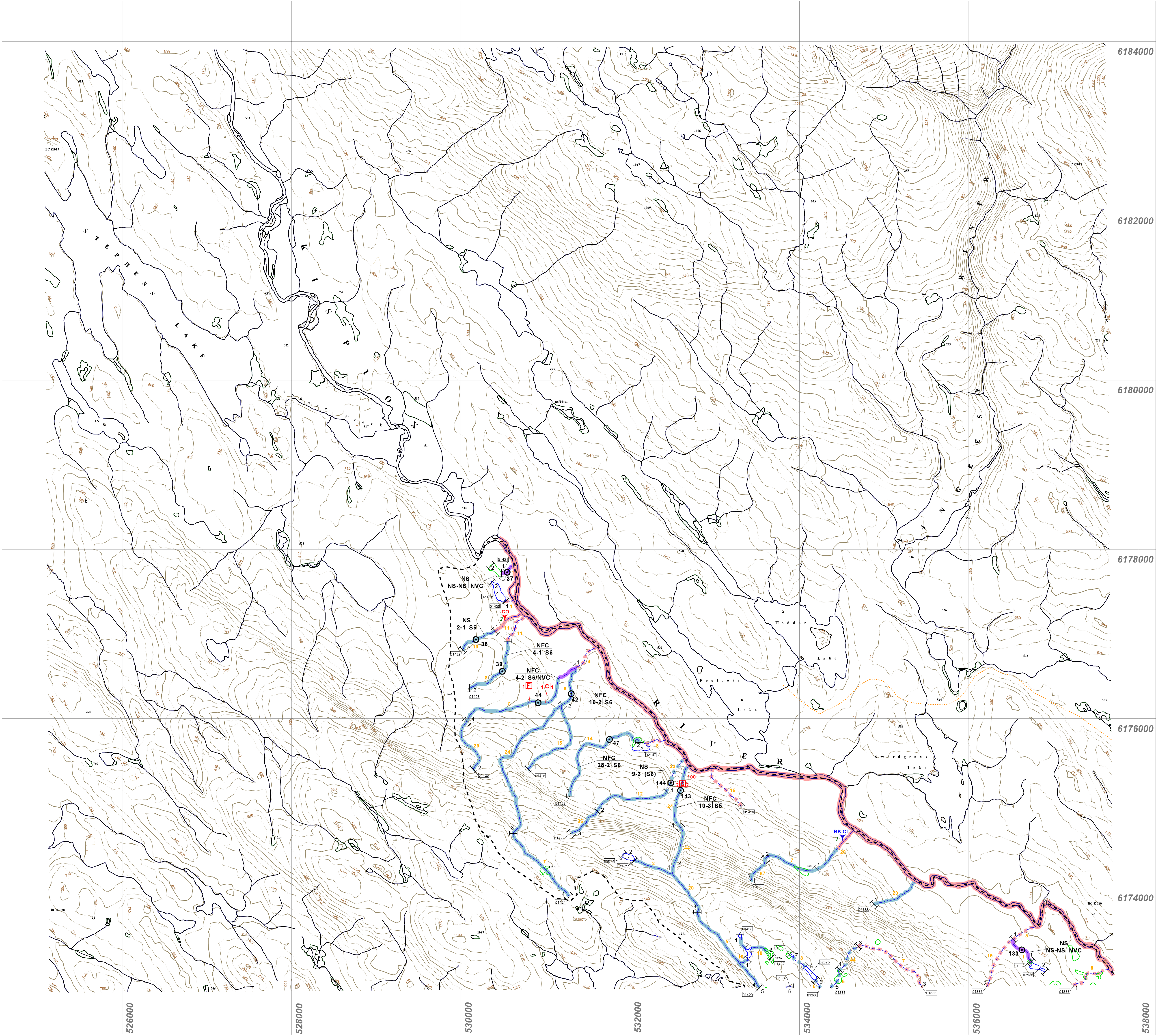
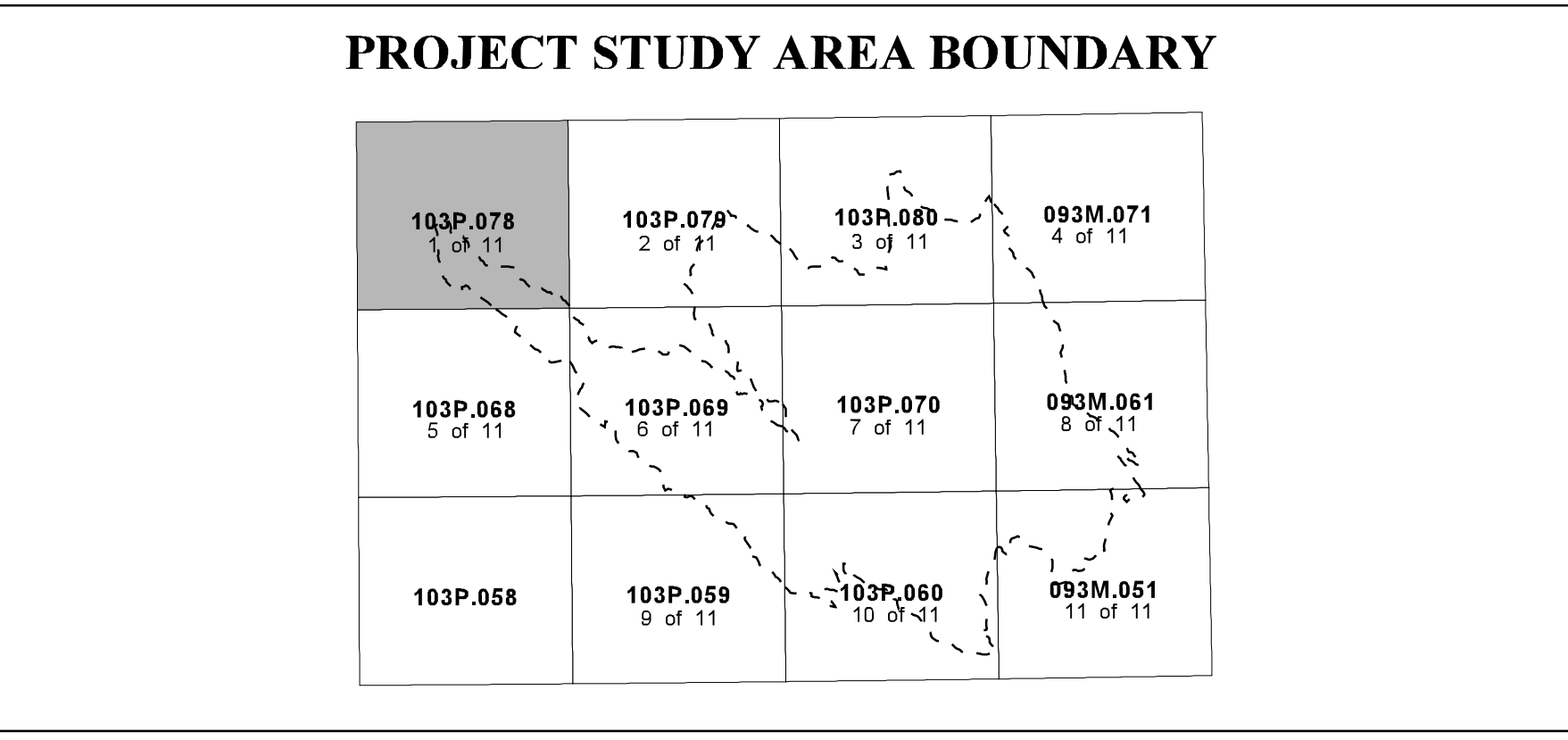


**FISH SPECIES**

CODE	DESCRIPTION	Historical - Symbology
NFC	No Fish Caught	Fish Presence - Salmon
NS	Not Sampled	Fish Presence - Sport
BT	Bull Trout	Fish Presence - Regionally Significant
CO	Coho Salmon	Fish Presence - Other
CT	Cutthroat Trout (General)	Fish Observation - Salmon
DV	Dolly Varden	Fish Observation - Sport
LNC	Longnose Dace	Fish Obs - Regionally Significant
NSC	Northern Squawfish	Fish Observation - Other
MW	Mountain Whitefish	Fish Spawning Area
RB	Rainbow Trout	Historical Sample Site
ST	Sheefhead Trout	Historical Sample Site Number

Source: MELP



"This product has been accepted as being in accordance with approved standards within the limits of Ministry quality assurance procedures. Users are cautioned that interpreted information on this product developed for the purposes of the Forest Practices Code Act and Regulations for example stream classifications, is subject to review by a statutory decision maker for the purposes of determining whether or not to approve an operational plan."

**INVENTORY SOURCE INFORMATION CODES**

CODE	DESCRIPTION	CODE	DESCRIPTION	CODE	DESCRIPTION	CODE	DESCRIPTION	CODE	DESCRIPTION
BASE	Base Map	LE SYM	Lake Symbol	APP	Aerial Photography	AP	Aerial Photography	INVT	Inventory - Group persons resp. for conducting inventory
TRIM	1:20,000 TRIM Maps	INV	Field Inventory	YDN	Video, Approximate	YDN	Video, Approximate	MELP	Ministry of Environment, Lands & Parks
NTS	1:50,000 NTS Maps	SS	Summary	VPC	Video, Corrected	VPC	Video, Corrected	MOF	Ministry of Forests
OTH	Other Map Source	N/A	Not Applicable	OTH	Other	OTH	Other	GRC	Geological Survey of Canada
STR SYM	Stream Symbol	OTH	Other	HAB	Habitat Information	HAB	Habitat Information	OTH	Other
INV	Field Inventory	LOC	Location Information	INV	Field Inventory	INV	Field Inventory	DATE INV	Date of Inventory
SS	Summary	PDE	Field Estimate	SS	Summary	SS	Summary		
N/A	Not Applicable	PDG	Field GPS	N/A	Not Applicable	N/A	Not Applicable		
OTH	Other	APE	Aerial Estimate	OTH	Other	OTH	Other		

**FOREST PRACTICES CODE RIPARIAN CLASSES (STREAM CLASSIFICATION)**

Riparian Class	Average Channel Width (m)	Reserve Zone Width (m)	Management Zone Width (m)	Total RMA Width (m)
S1 Large River	> 100	0	100	100
S2	> 20	0	20	20
S3	> 5 < 20	10	20	50
S4	> 1.5 < 5	20	30	40
S5	> 1 < 1.5	0	30	30
S6	> 3	0	30	30
S7	< 3	0	20	20

**BASE MAP INFORMATION**

Projection: UTM  
Datum: NAD83  
UTM Zone: 9

**INVENTORY SOURCE INFORMATION**

BASE: TRIM  
LOC: FDG  
HAB: INV  
DATE INV: 1998/08/23  
STR SYM: INV  
LK SYM: N/A  
FISH: INV  
INV MGNT: MELP